

**Nebraska Hospital Association
Nebraska Hospital Information System**

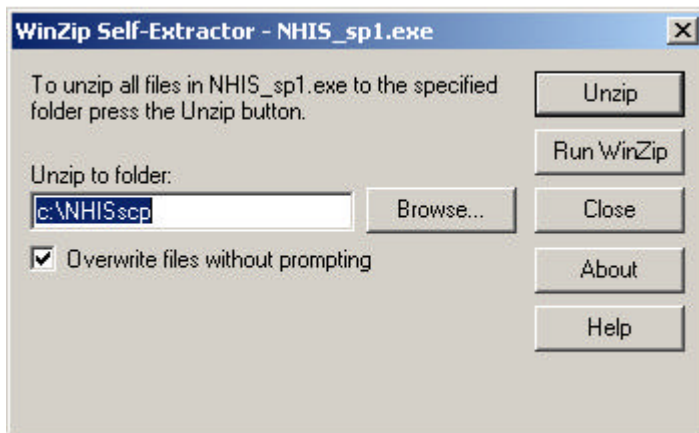
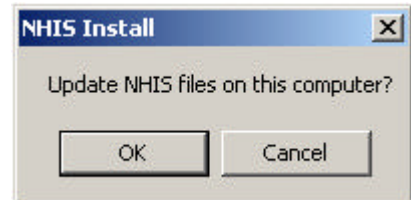
Claims data submission software.

Update Installation instructions for Windows 2000 or Windows XP.

1. Download file:

Download **NHIS_sp1.exe** from
www.nhanet.org/pdf/data/nhis/NHIS_sp1.exe

Open from the download dialogue box, or using
Windows Explorer, browse and run **NHIS_sp1.exe** by
double clicking on the file.



Self-extracting NHIS_sp1.exe zip
file will unzip to c:\NHISscp
folder.

*If you want to use a different
folder or drive, please contact the
NHA.*

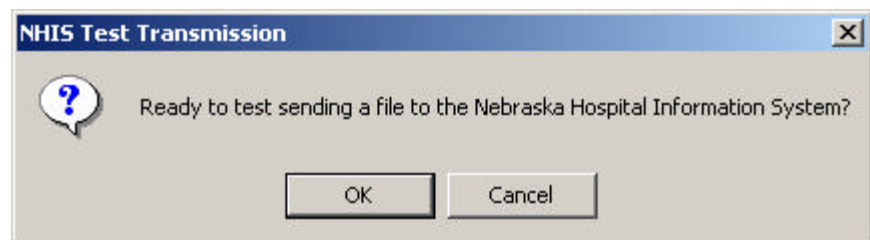
Select Unzip and Close for
NHIS_sp1.exe.

2. If you have not installed Log Monitor, follow the Log Monitor instructions at
www.nhanet.org/pdf/data/nhis/Logmon_Installation.pdf.

3. **Testing Internet data transmission using SSH client:** Run this test if this is the first
installation for this computer.

Browse to your c:\NHISscp directory and run testscp.bat by double clicking;
or - under Start, select Run and enter **c:\NHISscp\testscp.bat**

Press OK to send test
file. Pressing Cancel
will terminate test.



These installation instructions are for general use. If you have questions or need additional
assistance, please contact Kevin Conway, Vice President, Health information at 402-458-4910 or
kconway@nhanet.org.