

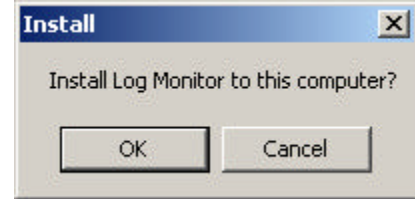
**Nebraska Hospital Association  
Nebraska Hospital Information System**

**Log Monitor installation instructions:**

**1. Unzip files:**

Download **logmon.exe** from [www.nhanet.org/data](http://www.nhanet.org/data).

Open from the download dialogue box, or using Windows Explorer, browse and run **logmon.exe** by double clicking on the file.



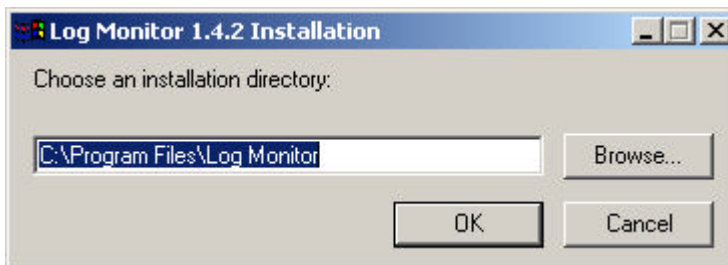
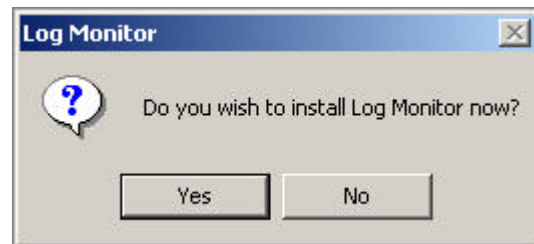
Click Setup and self-extracting logmon.exe zip file will unzip to temporary folder.

**2. Install Log Monitor:**

Unzipping file should start install process;

Respond Yes to “Do you wish to install Log Monitor now?”

Read and accept Log Monitor license agreement.



Click OK for default installation directory of c:\Program Files\Log Monitor.

*If you want to use a different folder or drive, please contact the NHA.*

Respond through remaining prompts.

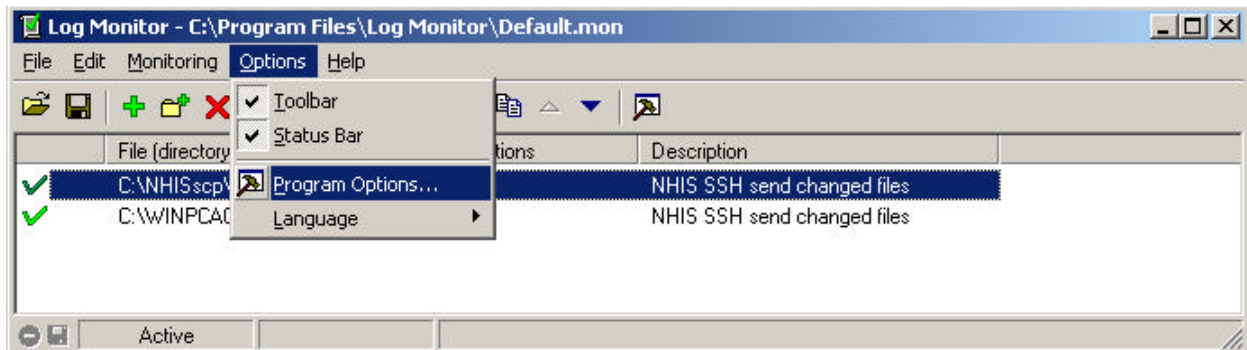
Note: Log Monitor allows unattended monitoring for the data file. Once a file appears in the monitored directory, Log Monitor will execute a command to send the file.

### 3. Configure Log Monitor:

**Log Monitor must be configured for each user (login id) on each computer.**

In Log Monitor control panel, select Options, then select Program Options.

If Log Monitor is not open, under Windows Start, select Programs, then Log Monitor group and select Log Monitor. If Log Monitor control panel does not appear, double click on the Log Monitor icon in your system tray.



On the General tab, check:

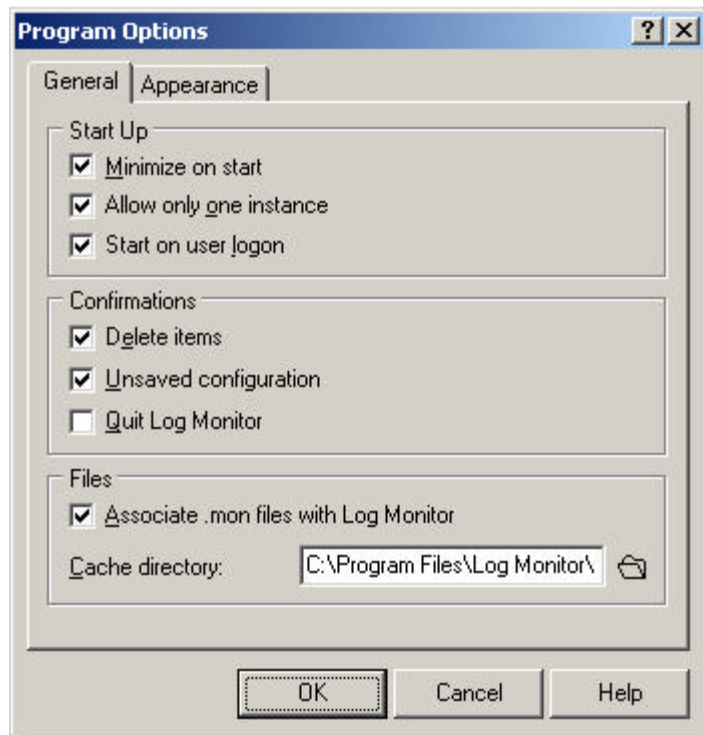
- ✓ Minimize on start
- ✓ Allow only one instance
- ✓ Start on user logon
- ✓ Delete items
- ✓ Unsaved configuration
- ✓ Associate .mon file with Log Monitor

Leave "Quit Log Monitor" unchecked.

Click OK.


Minimize Log Monitor.

You may open Log Monitor by double clicking on the icon in the system tray.



These installation instructions are for general use. If you have questions or need additional assistance, please contact Kevin Conway, Vice President, Health information at 402-458-4910 or [kconway@nhanet.org](mailto:kconway@nhanet.org).

#### 4. **Starting Log Monitor (optional step):**

“Start on user login” may not start Log Monitor with your login. Automatically starting Log Monitor with your login is the preferred method. You can tell if Log Monitor starts by the green check icon in the system tray. 

Log monitor uses the default configuration file (default.mon) in the Log Monitor program directory.

e.g. c:\Program Files\Log Monitor\default.mon

**If Log monitor does not automatically start with your login, you need to create a shortcut to c:\Program Files\Log Monitor\default.mon in your startup directory.** Placing the shortcut in user startup directory will start NHIS Log Monitor configuration at user login.

Directory is most likely;

c:\Documents and Settings\”user name”\Start Menu\Programs\Startup

Creating a shortcut:

Under Start, select Settings, then Taskbar.  
Under Start Menu Programs tab, select Add.

Enter “c:\Program Files\Log Monitor\default.mon” (with quotes) or browse to the file and click on it. If browsing, be sure to indicate “all types of files” in drop down box.

Select Next.

Choose Startup folder for location of shortcut.

Leave name as default.mon.

Select Finish.

Next time you login, Log Monitor icon should appear in your system tray.