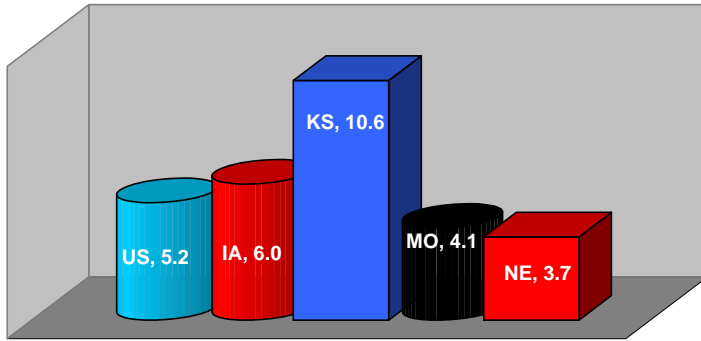
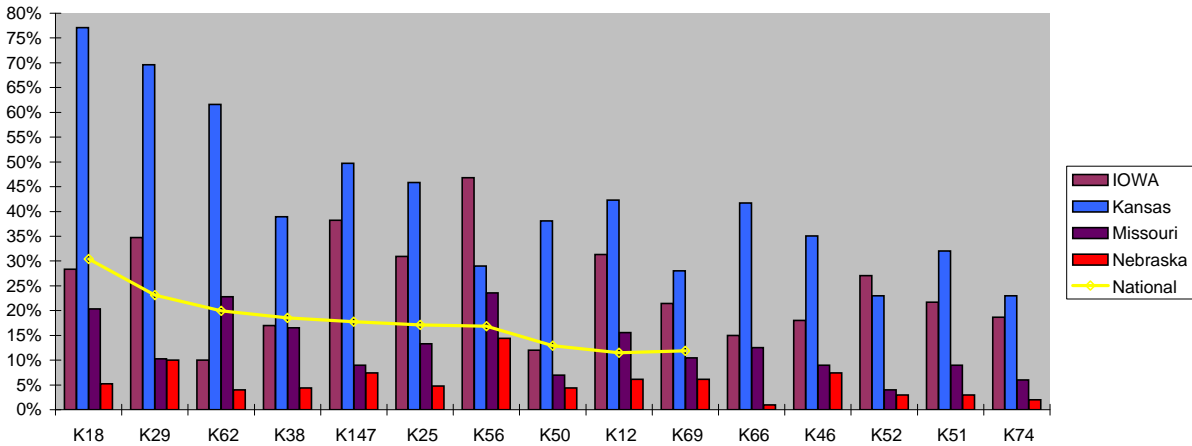


### LSC Deficiency Averages 2006



### LSC Citation Frequency



- K18 - Corridor Doors
- K29 - Hazardous Areas
- K62 - Sprinkler System Maintenance
- K38 - Exit Access
- K147 - Electrical
- K25 - Smoke Partition
- K56 - Sprinkler System
- K50 - Fire Drills
- K12 - Construction Type
- K69 - Cooking Equipment
- K66 - Smoking
- K46 - Emergency Lighting
- K52 - Fire Alarm Testing
- K51 - Fire Alarm System
- K74 - Combustible Curtains

### Most Commonly Cited LSC Deficiencies by Nation, Region and State

	K18	K29	K62	K38	K147	K25	K56	K50	K12	K69	K66	K46	K52	K51	K74
National	30%	23%	20%	19%	18%	17%	17%	13%	12%	12%					
Region VII	33%	31%	25%	20%	27%	25%	30%	15%	25%	17%	18%	17%			
IOWA	28%	35%	10%	17%	38%	31%	47%	12%	31%	21%	15%	18%	27%	22%	19%
Kansas	77%	70%	62%	39%	50%	46%	29%	38%	42%	28%	42%	35%	23%	32%	23%
Missouri	20%	10%	23%	17%	9%	13%	24%	7%	16%	10%	13%	9%	4%	9%	6%
Nebraska	5%	10%	4%	4%	7%	5%	14%	4%	6%	6%	1%	7%	3%	3%	2%

Nebraska LSC Comparative  
2.2 deficiencies per SA survey  
11 deficiencies per RO Comparative

Missouri LSC Comparative  
2.01 deficiencies per SA survey  
10.13 deficiencies per RO Comparative